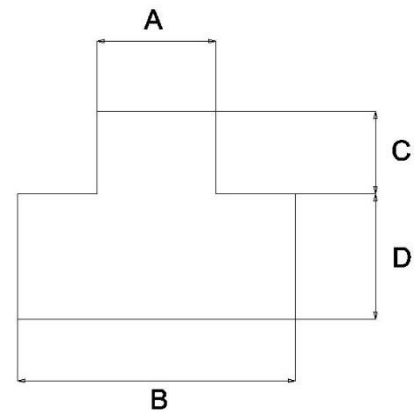
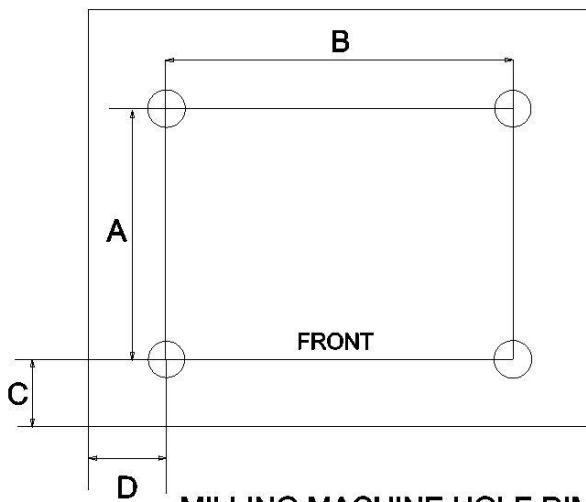


Machine: 3208	WM14B
<u>Product Dimensions:</u>	
Weight	60kg
Length x Width x Height	610 x 465 x 820mm
Tray Length x Depth	450 x 430mm
Base size Length and Depth	220 x 280mm
<u>Shipping Dimensions</u>	
Length x Width x Height	525 x 525 x 840mm
<u>Power/Motor</u>	
Motor size	750W
Power Transfer (GH) gearbox or (VS) variable speed	VS
Voltage (240v single) (440v 3 Phase)	240V 50HZ
Fitment (Plug connection type)	3 Pin plug
Current	3.2A
Spindle speeds (No: and achievable speeds)	100-1500 / 200-3000rpm
<u>Main Specifications</u>	
Table size	500 X 140mm
Longitudinal travel (X)	350mm
Cross Table travel (Y)	140mm
Head Travel or Knee (Z)	200mm
Quill/Spindle stroke	52mm
Distance spindle to table	275mm
Throat (Spindle middle to Column)	170mm
Table height from base	140mm
Spindle Taper size and thread	MT2, 3/8 and 10mm drawbars
Head tilt left to right and Head tilt front to back	Side only calibrated 45/-45 deg (90-90)
Drilling capacity	13mm
Milling capacity	16mm
Spindle Bearing type	Sealed roller bearing
<u>Other Specifications</u>	
Country of origin	China
Warranty	12 Months
Approximated assembly and setup time	30 mins
CE approved Certificate	Available upon request

Additional products	
Optional stand	3220DL
Optional power feed	N/A
Optional Digital Read Out Kit	4906
X axis scale (left to right)	400MM
Y axis scale (forward to back)	200MM
Z axis scale (head)	300MM
Tee Nut size and no of slots	A=9.7 B=15 C=6 D=6mm (3 SLOTS) 9522 M8
Machine/Stand Hole positions	A=165 B=200 C=100 D=125mm



MILLING MACHINE HOLE DIMENSIONS

